

SCHEDULE "M"
TO TOWN OF BANFF FEES AND CHARGES BYLAW
SEWER SYSTEM (BYLAW 17-3)

SYSTEM FEES					
	Unit Base	2019 Fee	2020 Fee	Increase	Comment
Connection of Sewer Services	per unit	Costs as determined by Director, Corporate Services	Costs as determined by Director, Corporate Services		
Application for sewage service connection	per unit	\$200.00	\$200.00	0%	
Termination of Sewer Service	per unit	\$200.00	\$200.00	0%	
Sanitary Dump Station (RV Single Use)	per load	\$5.00	\$10.00	100%	
Sanitary Dump Station (Commerical Use)	per load	\$40.00	\$60.00	50%	

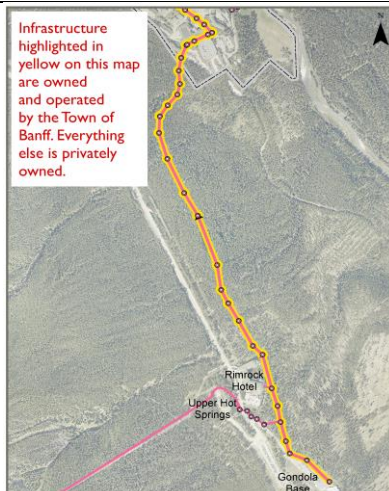
SCHEDULE "M"
TO TOWN OF BANFF FEES AND CHARGES BYLAW
SEWER SYSTEM (BYLAW 17-3)
SEWER UTILITY RATES

Consumption Rate (per cubic meter)			
Town Rate		Out of Town Rate	
2019	2020	2019	2020
\$2.13	\$2.26	\$2.64	\$2.80

Water Meter Service Size	Monthly Base Rate		Monthly Base Rate	
	Town Rate	Out of Town Rate	Town Rate	Out of Town Rate
	2019		2020	
15 mm (.625 inch)	\$14.13	\$18.38	\$14.99	\$19.50
20 mm (.75 inch)	\$15.54	\$21.19	\$16.49	\$22.49
25 mm (1.0 inch)	\$19.78	\$25.41	\$20.98	\$26.96
40 mm (1.5 inch)	\$25.41	\$32.49	\$26.96	\$34.48
50 mm (2.0 inches)	\$40.97	\$50.85	\$43.47	\$53.95
75 mm (3.0 inches)	\$155.36	\$197.74	\$164.84	\$209.80
100 mm (4.0 inches)	\$197.74	\$254.24	\$209.80	\$269.75
150 mm (6.0 inches)	\$296.62	\$367.23	\$314.71	\$389.63
Unmetered Properties	Un-metered rates are based on the service running to the property and are to be set by the Town Manager.			

Consumers 65 years of age and older are eligible for a \$50.00 per annum reduction in annual sewer charges for the residence owned and occupied by that consumer. Such reduction shall be given upon the consumer providing satisfactory evidence to the Director, Corporate Services of their date of birth.

Sulphur Mountain monthly infrastructure surcharge - \$1,550 per property located outside of the Town boundary serviced by the line identified below:



Percentage	
Town Rate	Out of Town Rate
2020	2020
6%	6%

Percentage Increase		
Water Meter Service Size	Monthly Base Rate	
	Town Rate	Out of Town Rate
	2020	
15 mm (.625 inch)	6%	6%
20 mm (.75 inch)	6%	6%
25 mm (1.0 inch)	6%	6%
40 mm (1.5 inch)	6%	6%
50 mm (2.0 inches)	6%	6%
75 mm (3.0 inches)	6%	6%
100 mm (4.0 inches)	6%	6%
150 mm (6.0 inches)	6%	6%
Unmetered Properties	Un-metered rates are based on the service running to the property and are to be set by	