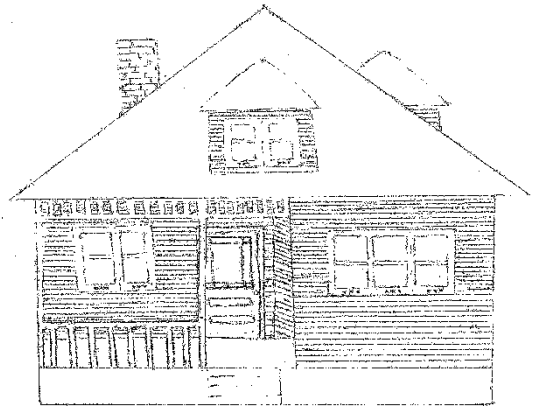


TALL PYRAMIDAL IN BANFF 1900-1914

Banff's low pyramidal houses are built on square, or nearly square, floorplans. The earliest versions of the pyramidal form, built in the pre-WWI period, are known as Tall Pyramidal houses because their small massing causes their roofs to appear tall rather than wide.

Architectural Principles

- Simple design
- Light framing
- Low- to steeply-pitched hipped roof
- Minimal, enclosed eave overhang
- Small massing



Identifying Features

- Square floorplan
- One storey
- Wood siding wall cladding
- Small, hipped dormers
- Occasional half-width porch, sometimes contained under the roof structure
- Occasional simple Folk Victorian porch spindlework

