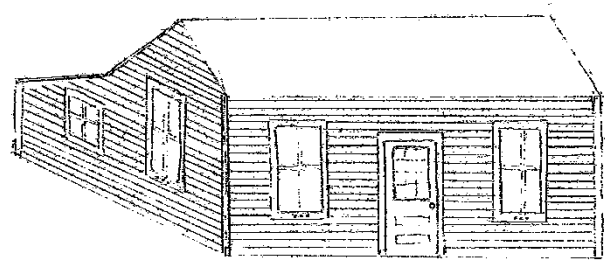


HALL AND PARLOUR IN BANFF 1905-1925

Hall and Parlour buildings are a rarer residential form in Banff. The small, single-storey houses feature floorplans that are generally two rooms wide and one room deep, with frequent rear yard additions to provide increased living space. Later forms tend to be slightly wider than the earliest examples.

Architectural Principles

- Simple design
- Light framing
- Moderately-pitched side-gabled roof
- Little-to-no eave overhang
- Breaks in roofline at porches and rear additions



Identifying Features

- Small, rectangular floorplan
- One storey
- Centred entrance (most cases)
- Wood siding wall cladding

